



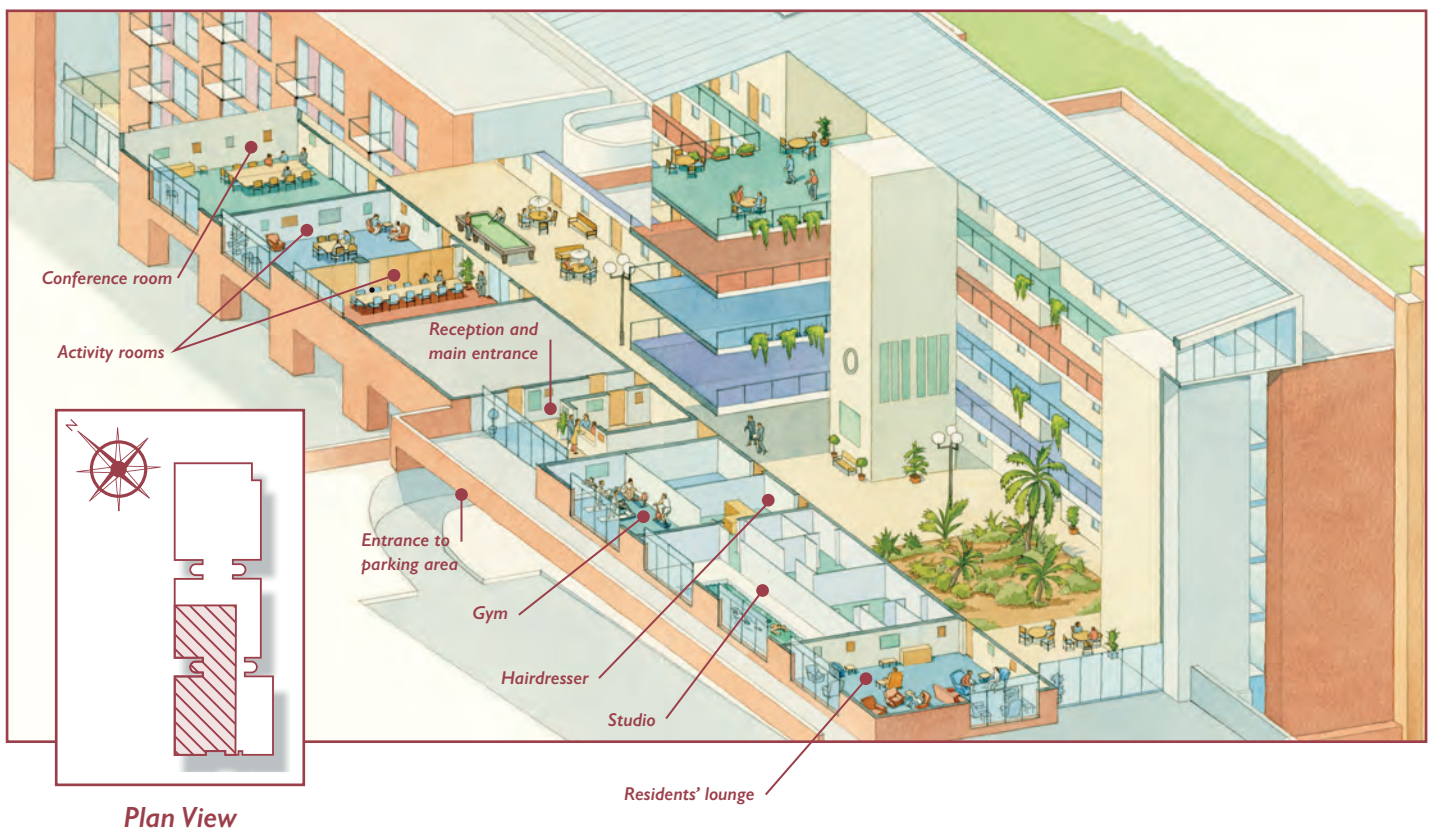
St Monica Trust

Monica Wills House retirement community

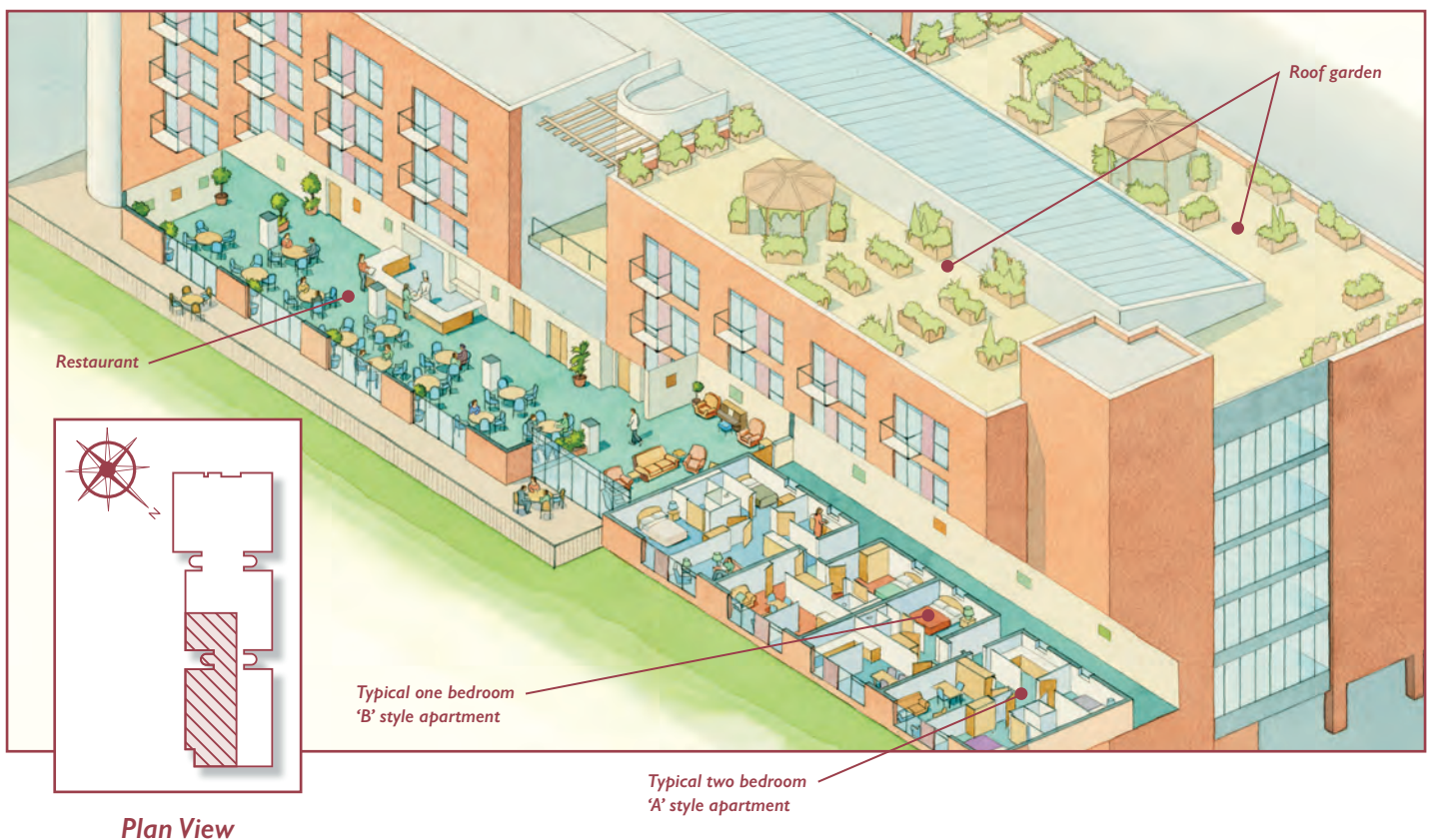


Monica Wills House retirement community

View 1

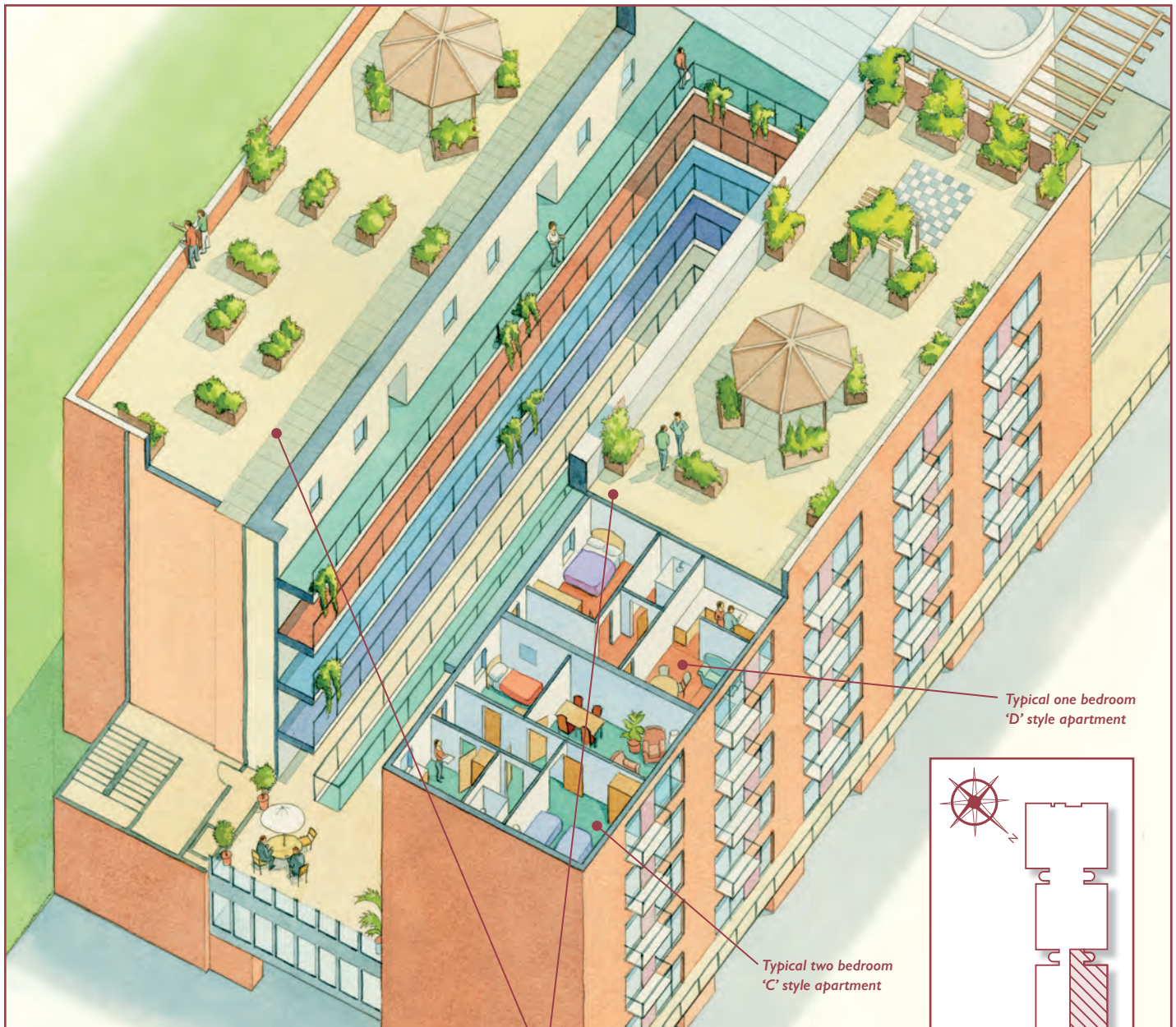


View 2





View 3



These cutaway views are for illustrative purposes only.

Roof garden

Typical one bedroom
'D' style apartment

Typical two bedroom
'C' style apartment

Plan View

Apartments and facilities

Lower ground floor: 1-4

Ground floor: 5-22, care and support office and porters' office

First floor: 23-47

Second floor: 48-72 and guest room

Third floor: 73-97 and library

Fourth floor: 98-122 and laundrette

Monica Wills House retirement community

Monica Wills House is an urban retirement village in the heart of Bedminster, South Bristol. It offers a unique combination of care, support and sheltered accommodation in an active and lively environment.

Contact information

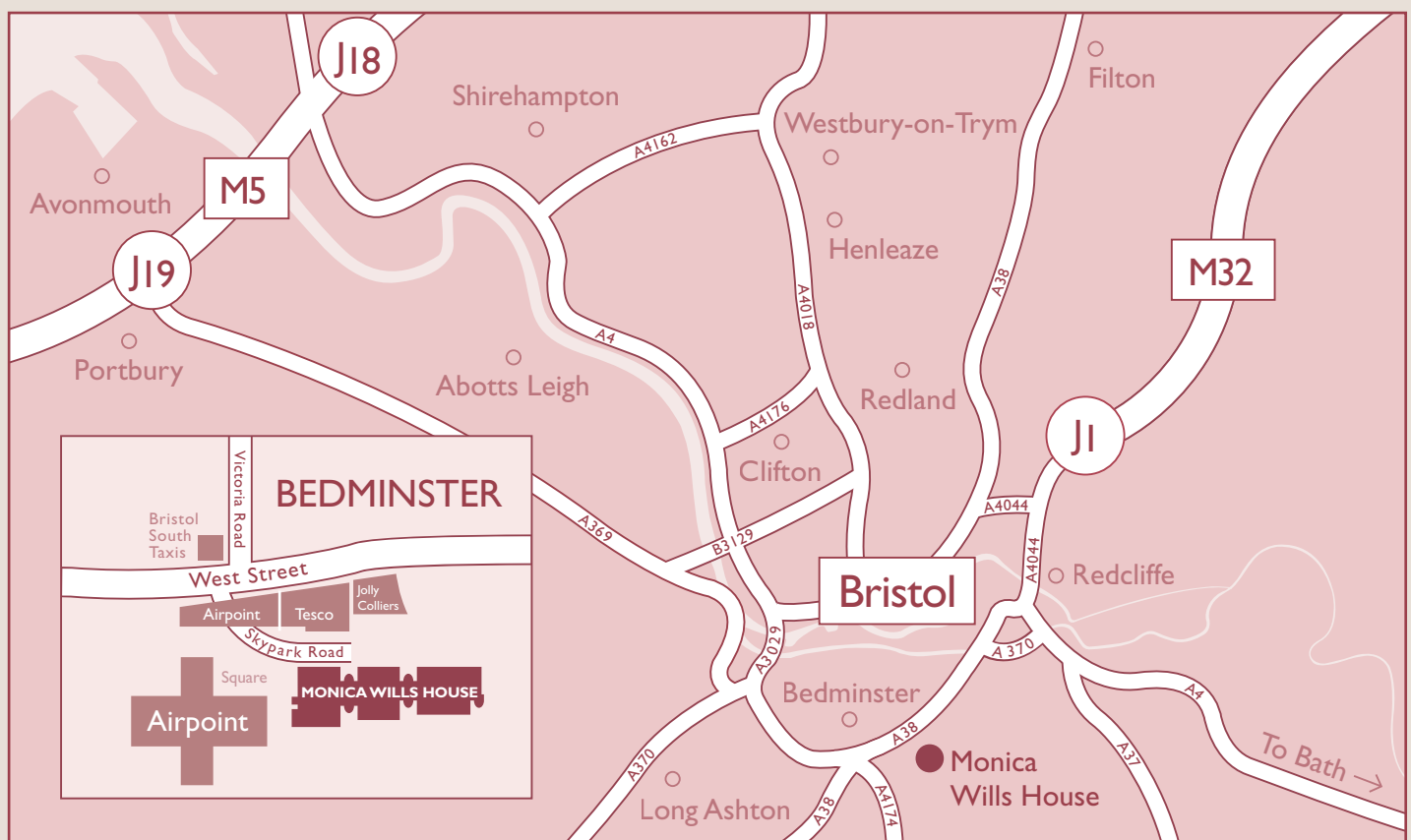
Reception: **0117 305 2350**

Porters: **0117 305 2361**

Marketing team: **0117 949 4004**

info@stmonicastrust.org.uk

www.stmonicastrust.org.uk



St Monica Trust
Delivering well-being

www.stmonicastrust.org.uk

Registered charity 202151 | 8/18 | 750