



St Monica Trust

54 OATLEY HOUSE

COTE LANE, WESTBURY-ON-TRYM, BRISTOL, BS9 3TN

£365,000 Leasehold (other charges apply)

FIRST FLOOR ONE BEDROOM APARTMENT



POSITION OF APARTMENT

- ◆ Sunny living room with large windows overlooking sunny terrace below
- ◆ East facing
- ◆ One bedroom with en-suite shower room
- ◆ Separate WC
- ◆ Fully decorated throughout



POSITION OF APARTMENT

- ◆ Modern kitchen with dishwasher, washing machine, fridge/freezer and integrated hob, oven and extractor fan
- ◆ Constructed in 1925
- ◆ Newly refurbished in 2021



CHAPEL



OATLEY CHAPEL AND OATLEY HOUSE

Community Fee £8,506 single pa / £10,899 couple pa | Council Tax Band C £1,923.24 pa

Current EPC Band D (Rating 63) | Potential EPC Band D (Rating 65)

54 OATLEY HOUSE

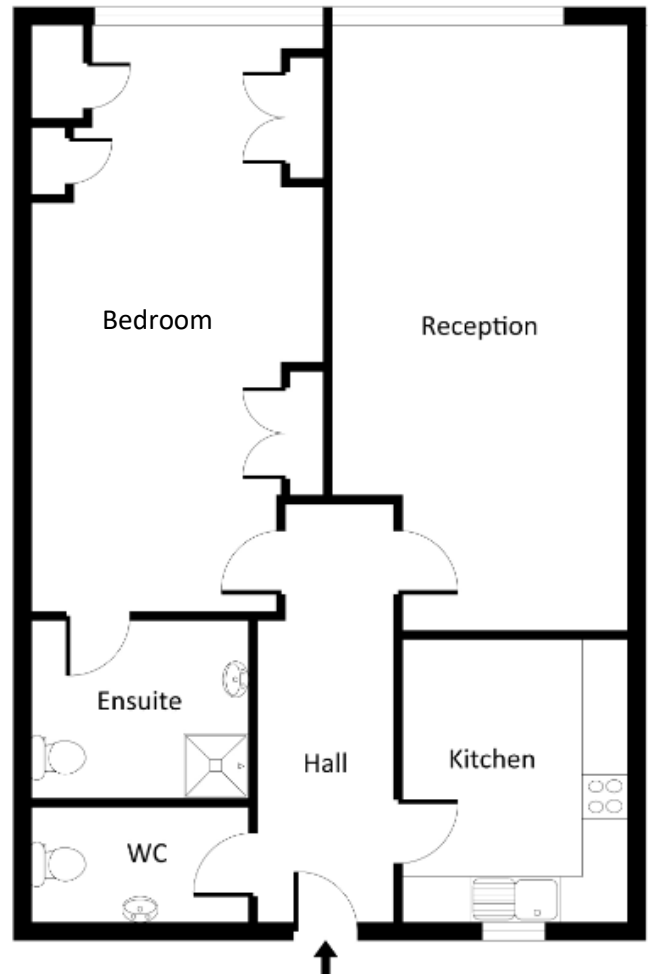
Dimensions

Living room	6.94m x 2.93m	22'9" x 9'7"
Kitchen	3.10m x 2.47m	10'2" x 8'1"
Bedroom	6.42m x 2.95m	21'1" x 9'8"

Please note this apartment is sold unfurnished. Dimensions shown are maximum. Certain particulars may vary, please check with our sales team.

St Monica Trust buys back all properties at the end of each ownership period. The seller receives back the original purchase price after deducting a reinstatement charge and any outstanding charges. The reinstatement charge covers the costs of putting the apartment back into an 'as new' condition. The cost of the reinstatement varies from £3,000 to £10,000 dependent on the size of the apartment and the level of redecoration required.

You may need to meet with the Retirement Community Manager as part of the allocations process. This will be booked at a time convenient to you.



TOTAL AREA: 67.8 SQM

VIEWING DATES FOR THIS PROPERTY ARE

2021

PLEASE CALL THE SALESTEAM TO BOOK A VIEWING

0117 949 4004

To unsubscribe

please telephone as above

or email sales.team@stmonicastrust.org.uk



St Monica Trust

