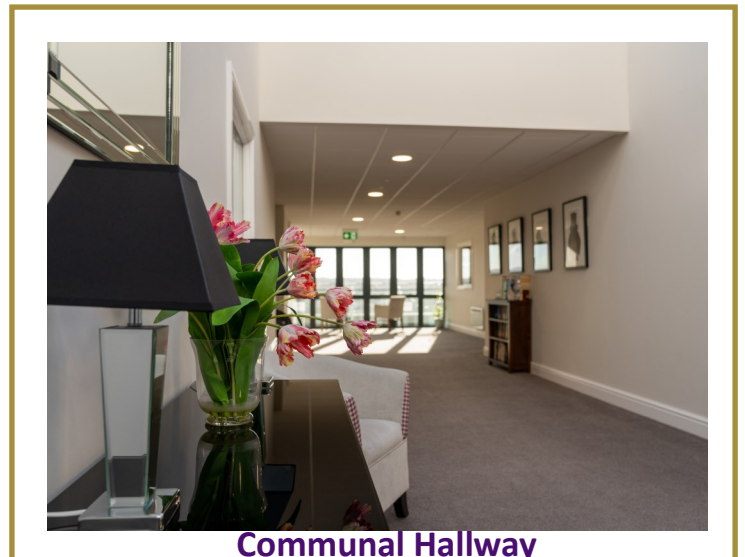
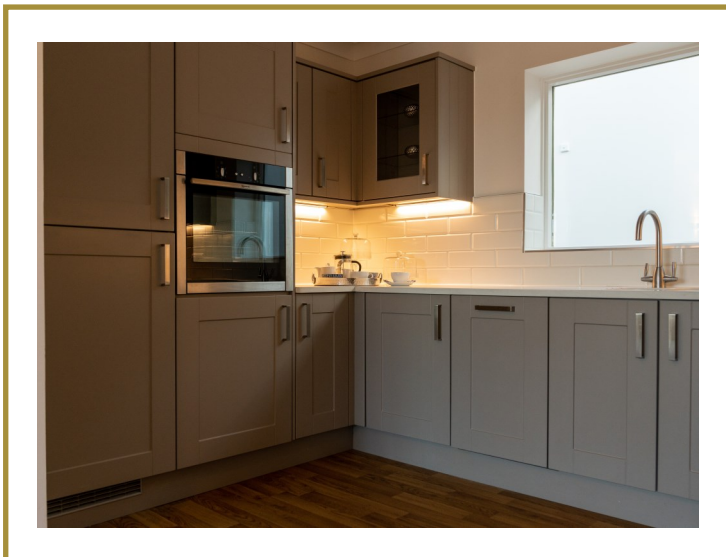


## NEWLY REFURBISHED ONE BED WITH BALCONY



- ◆ Private balcony accessed from lounge and bedroom
- ◆ En-suite shower room
- ◆ Newly carpeted and decorated throughout

- ◆ Separate utility room
- ◆ Fully fitted kitchen including dishwasher
- ◆ All white goods included
- ◆ Sold unfurnished, previously owned



Communal Hallway

# 30 BROOKMEAD

## APARTMENT TYPE R

**PLOTS** 18, 22-23, 25-26 and 30

**BEDROOMS** 1

**SHOWER ROOMS** 1

**Kitchen/dining/living area**

7.6m x 3.6m / 24'11" x 11'10"

**Bedroom 1**

3.4m x 3.6m / 11'2" x 11'10"

**Shower room**

2.6m x 2.0m / 8'6" x 6'7"

**Laundry room**

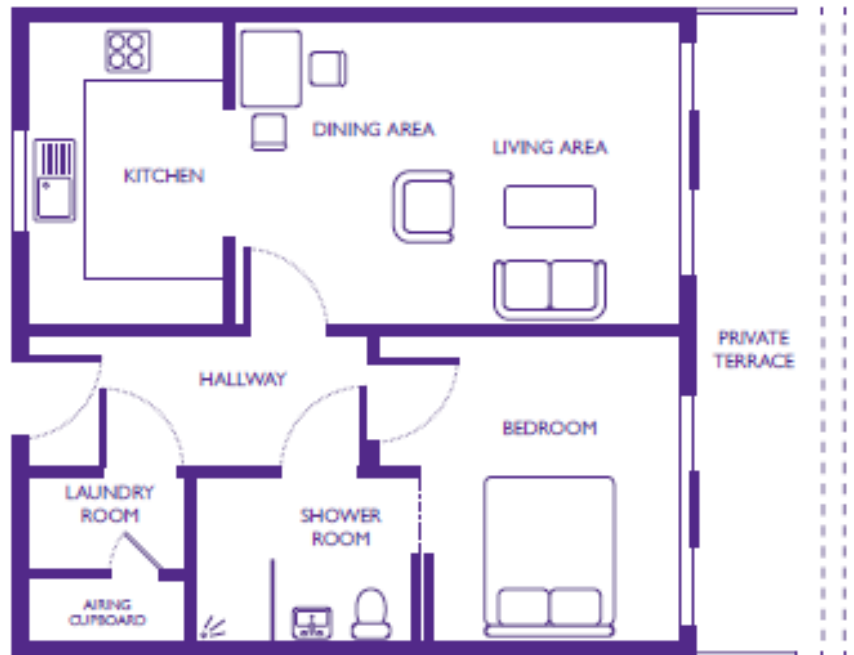
1.2m x 1.8m / 3'11" x 5'11"

**Private terrace**

7.6m x 1.3m / 24'11" x 4'3"

**Total area**

55m<sup>2</sup> / 65yd<sup>2</sup>



Dimensions shown are maximum. Some plots are handed compared to floorplans. Certain particulars may vary, please check with our sales team. The floor plans depict a typical layout of this apartment type. Floor plans are not to scale. May 2017.

Building converted in August 2017. Please note that this apartment is sold unfurnished and furniture in this floorplan is for reference only. Dimensions shown are maximum. Some plots are handed compared to floorplans. Certain particulars may vary, please check with our sales team. The floorplans depict a typical layout of this apartment type. Floorplans are not to scale. A surrender fee is payable when the property is returned to the Trust (ranging from 1% to 10% of purchase price depending on the lease and length of occupation).

## SALES ENQUIRIES

If you are interested in viewing any of our apartments or would like some further information please call our Sales Team on

**0117 949 4004**

email [sales.team@stmonicastrust.org.uk](mailto:sales.team@stmonicastrust.org.uk)

[thechocolatequarter.org.uk](http://thechocolatequarter.org.uk)



St Monica Trust



APPROVED  
OPERATOR