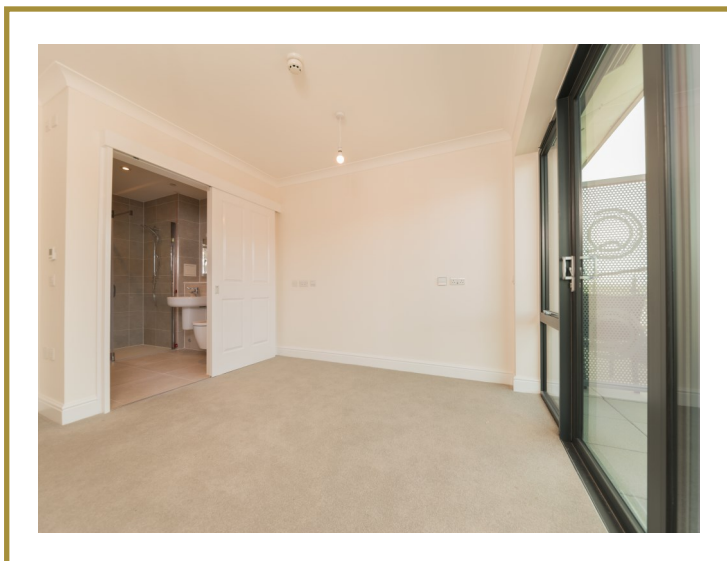


ONE BEDROOM APARTMENT WITH BALCONY



- ◆ Private balcony accessed from lounge and bedroom
- ◆ En-suite shower room
- ◆ Separate utility room
- ◆ Fully fitted kitchen including dishwasher

- ◆ All white goods included
- ◆ Sold unfurnished, previously owned
- ◆ Close to lift and amenities
- ◆ Communal viewing terrace easily accessible



BEDROOM WITH ENSUITE AND PATIO DOORS TO BALCONY

23 BROOKMEAD

APARTMENT TYPE R

PLOTS 18, 22-23, 25-26 and 30

BEDROOMS 1

SHOWER ROOMS 1

Kitchen/dining/living area

7.6m x 3.6m / 24'11" x 11'10"

Bedroom 1

3.4m x 3.6m / 11'2" x 11'10"

Shower room

2.6m x 2.0m / 8'6" x 6'7"

Laundry room

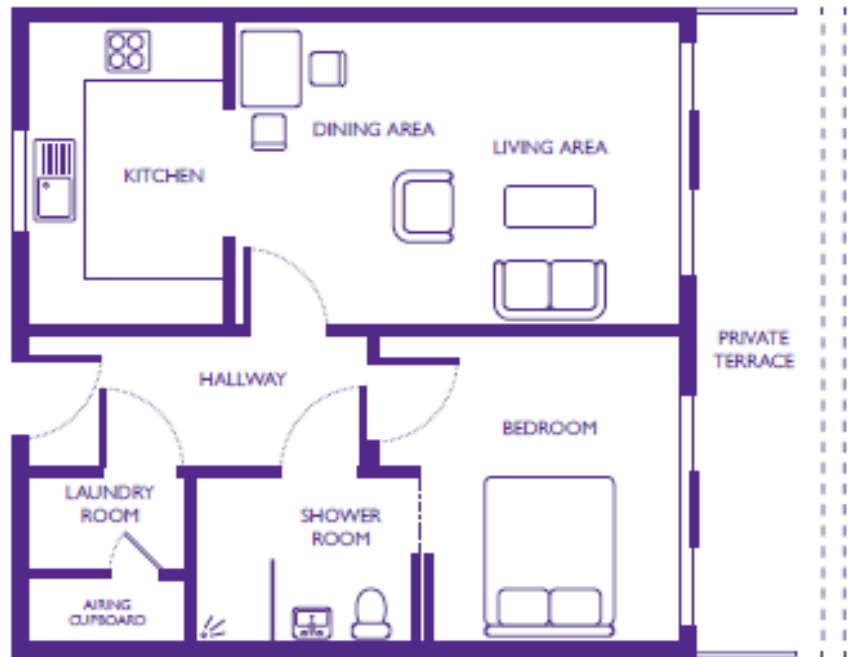
1.2m x 1.8m / 3'11" x 5'11"

Private terrace

7.6m x 1.3m / 24'11" x 4'3"

Total area

55m² / 65yd²



Dimensions shown are maximum. Some plots are handed compared to floorplans. Certain particulars may vary, please check with our sales team. The floor plans depict a typical layout of this apartment type. Floor plans are not to scale. May 2017.

Building converted in August 2017. Please note that this apartment is sold unfurnished and furniture in this floorplan is for reference only. Dimensions shown are maximum. Some plots are handed compared to floorplans. Certain particulars may vary, please check with our sales team. The floorplans depict a typical layout of this apartment type. Floorplans are not to scale. A surrender fee is payable when the property is returned to the Trust (ranging from 1% to 10% of purchase price depending on the lease and length of occupation).

SALES ENQUIRIES

If you are interested in viewing any of our apartments or would like some further information please call our Sales Team on

0117 949 4004

email sales.team@stmonicastrust.org.uk

thechocolatequarter.org.uk



St Monica Trust



APPROVED
OPERATOR