



Westbury Fields

ST MONICA TRUST

## 21 Jessop Crescent

### One bedroom ground floor apartment



Westbury on Trym, Bristol BS10 6TQ

**£350,000 leasehold**  
(other charges apply)



St Monica Trust



APPROVED  
OPERATOR



Westbury Fields  
ST MONICA TRUST

## 21 Jessop Crescent

Westbury on Trym, Bristol BS10 6TQ



View from apartment

### Specification

---

- Well situated south facing apartment close to the Cricketers restaurant
- Living room opening onto patio garden with views across the cricket field
- Bedroom with modern ensuite shower room
- Separate guest WC
- Large modern kitchen with eye level oven and extractor fan and space for a fridge/freezer, washing machine and dishwasher
- Constructed in 2003, will be refurbished in 2023
- Shared ownership option available



**Typical kitchen**



**Typical shower room**

## Fees

£8,549 single person pa

£11,534 couple pa

Council Tax Band B £1,824.08pa

Current EPC Band C (Rating 79)

Potential EPC Band C (Rating 79)

## Viewing dates

Please call the sales team  
to book **0117 949 4004**

### Please note

This apartment is sold unfurnished. Dimensions shown are maximum. Certain particulars may vary, please check with our sales team.

St Monica Trust buys back all properties at the end of each ownership period.

The seller receives back the original purchase price after deducting a reinstatement charge and any outstanding charges. The reinstatement charge covers the costs of putting the apartment back into an 'as new' condition. The cost of the reinstatement varies from £3,000 to

£10,000 dependent on the size of the apartment and the level of redecoration required.

If you express an interest you may need to meet with the Village Manager immediately after your viewing appointment.

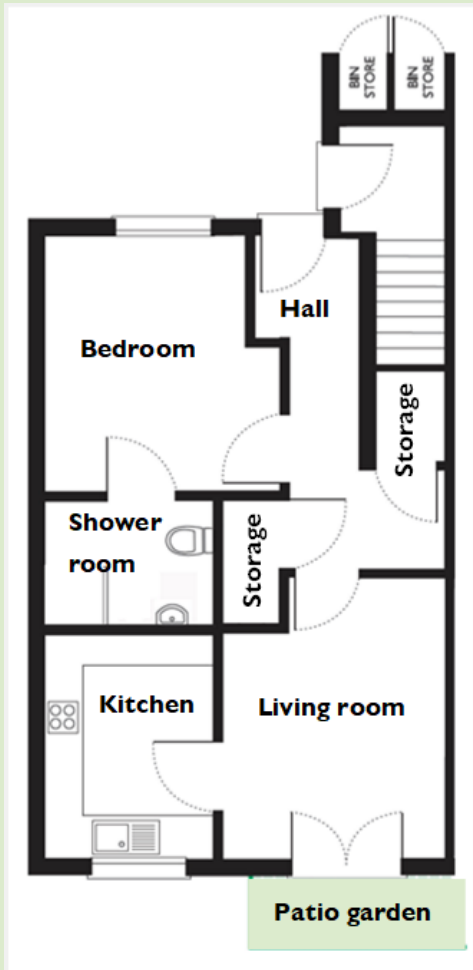


Westbury Fields

ST MONICA TRUST

## 21 Jessop Crescent

Westbury on Trym, Bristol BS10 6TQ



### Living room

4.20m x 3.21m

13'10" x 10'7"

### Kitchen

3.24m x 2.38m

10'8" x 7'10"

### Bedroom

3.67m x 3.32m

12'1" x 10'11"

### Shower room

2.12m x 1.98m

7'0" x 6'6"

**TOTAL AREA: 63 SQM**

To unsubscribe please telephone  
**0117 949 4004** or email  
**[sales.team@stmonicastrust.org.uk](mailto:sales.team@stmonicastrust.org.uk)**



St Monica Trust APPROVED  
OPERATOR

