



St Monica Trust

16 ST MONICA COURT (rental property)

COTE LANE, WESTBURY-ON-TRYM, BRISTOL, BS9 3TL

£1,939 pcm (plus telephone bill)

ONE BEDROOM FIRST FLOOR APARTMENT



VIEW FROM APARTMENT



ST MONICA COURT

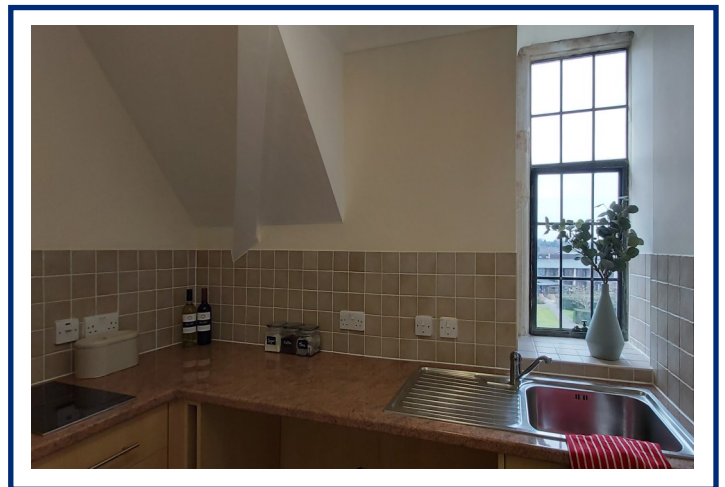
- ◆ South facing with views over the croquet lawn
- ◆ Sunny living room
- ◆ Single bedroom
- ◆ Shower room
- ◆ Kitchen with hob, extractor fan and eye level oven

- ◆ Constructed in 1920
- ◆ Redecorated in 2021
- ◆ Package includes all utility bills, council tax, community fees, 24 hour emergency care and support and porter security, daily 3 course lunch, laundry and housekeeping

Telephone charges NOT included



COTE LANE GROUNDS



TYPICAL KITCHEN

Current EPC Band C (Rating 74) | Potential EPC Band C (Rating 80)

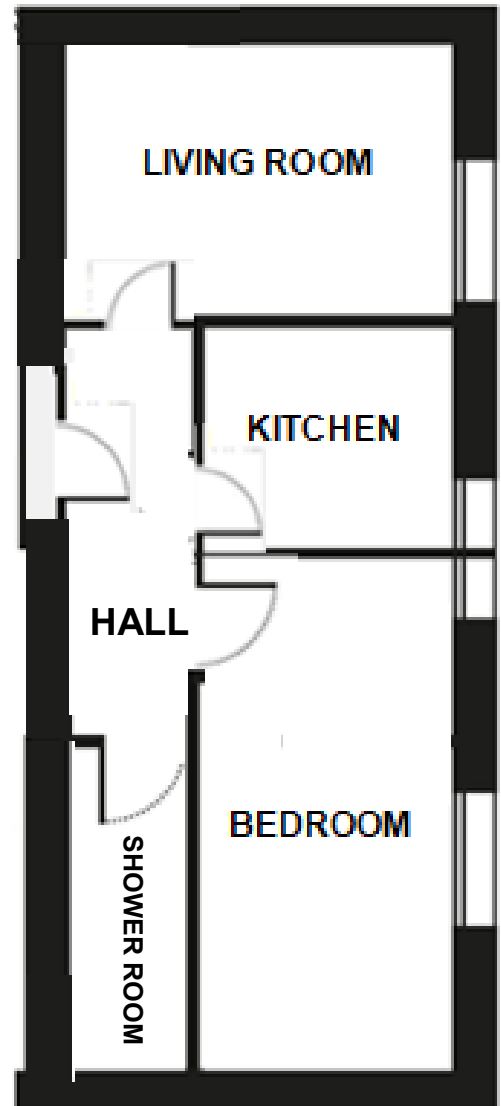
16 ST MONICA COURT

Dimensions

Living room	4.02m x 3.02m	13'3" x 9'11"
Bedroom	4.36m x 2.15m	14'4" x 7'1"
Kitchen	2.48m x 2.24m	8'2" x 7'4"

Please note this apartment is rented unfurnished. Dimensions shown are maximum. Certain particulars may vary, please check with our sales team. NB: This floor plan is not to scale

You may need to meet with the Retirement Community Manager as part of the allocations process. This will be booked at a time convenient to you.



VIEWING DATES FOR THIS PROPERTY ARE

Tuesday 12 October 2021

Tuesday 19 October 2021

PLEASE CALL THE SALES TEAM TO BOOK A VIEWING

0117 949 4004

To unsubscribe

please telephone as above

or email sales.team@stmonica.org.uk



St Monica Trust

