



Monica Wills House

ST MONICA TRUST

16 Monica Wills House

One bedroom apartment with Juliette balcony



Bedminster, Bristol BS3 3NH

£235,000 leasehold
(other charges apply)



St Monica Trust



APPROVED
OPERATOR



Monica Wills House

ST MONICA TRUST

16 Monica Wills House

Bedminster, Bristol BS3 3NH



Rooftop gardens

Specification

- Easterly facing ground floor apartment
- Open plan dining / lounge
- One bedroom, with ensuite
- Redecorated and new carpets
- New kitchen with extractor fan, hob and eye level oven
- Communal underground parking area
- Located close to lift and stairs
- Constructed in 2006
- Photos for illustrative purposes only



New Kitchen



Shower room

Fees & EPC

Fees applicable 2023/24

£5,253 single person pa

£6,435 couple pa

Council Tax Band A £1,563.49pa

Current EPC Band C (Rating 74)

Potential EPC Band B (Rating 85)

Viewings

Wednesday 6 March 2024

Please call the sales team
to book **0117 949 4004**

Please note

This apartment is sold unfurnished. Dimensions shown are maximum. Certain particulars may vary, please check with our sales team.

St Monica Trust buys back all properties at the end of each ownership period.

The seller receives back the original purchase price after deducting a reinstatement charge and any outstanding charges. The reinstatement charge covers the costs of putting the apartment back into an 'as new' condition. The cost of the reinstatement varies from £3,000 to

£10,000 dependent on the size of the apartment and the level of redecoration required.

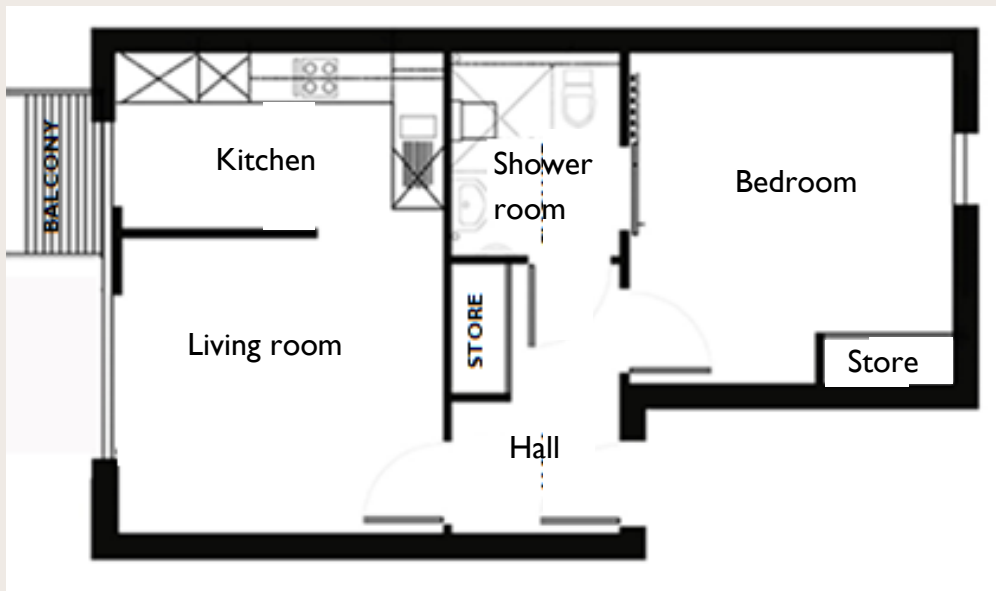
If you express an interest you may need to meet with the Village Manager immediately after your viewing appointment.



Monica Wills House

ST MONICA TRUST

16 Monica Wills House Bedminster, Bristol BS3 3NH



Living room
3.85m x 3.5m
12'6" x 11'4"

Kitchen
3.83m x 2.05m
12'5" x 6'7"

Bedroom I
3.85m x 3.8m
12'6" x 12'4"

Shower room
2.25m x 2.0m
7'3" x 6'5"

To unsubscribe please telephone
0117 949 4004 or email
sales.team@stmonicastrust.org.uk



St Monica Trust APPROVED
OPERATOR

