



St Monica Trust

12 WESTFIELD HOUSE (rental property) COTE LANE, WESTBURY-ON-TRYM, BRISTOL, BS9 3TJ £2,104 pcm (plus telephone bill)

ONE BED APARTMENT WITH PRIVATE BALCONY



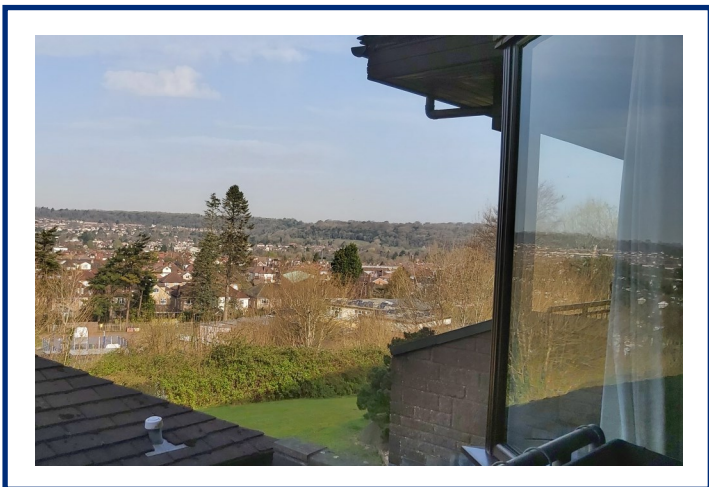
POSITION OF APARTMENT

- ◆ South west facing overlooking gardens
- ◆ Sunny living room opening onto private balcony
- ◆ One bedroom with fitted storage
- ◆ Entrance hallway with fitted storage
- ◆ New shower room
- ◆



RESIDENTS' LIBRARY

- ◆ Modern kitchen with hob, extractor fan and eye level oven
- ◆ Constructed in 1985
- ◆ Newly redecorated in 2021
- ◆ Package includes all utility bills, council tax, community fees, 24 hour emergency care and support and porter security, daily 3 course lunch, laundry and housekeeping



VIEW FROM APARTMENT



KITCHEN

Current EPC Band C (Rating 73) | Potential EPC Band C (Rating 78)

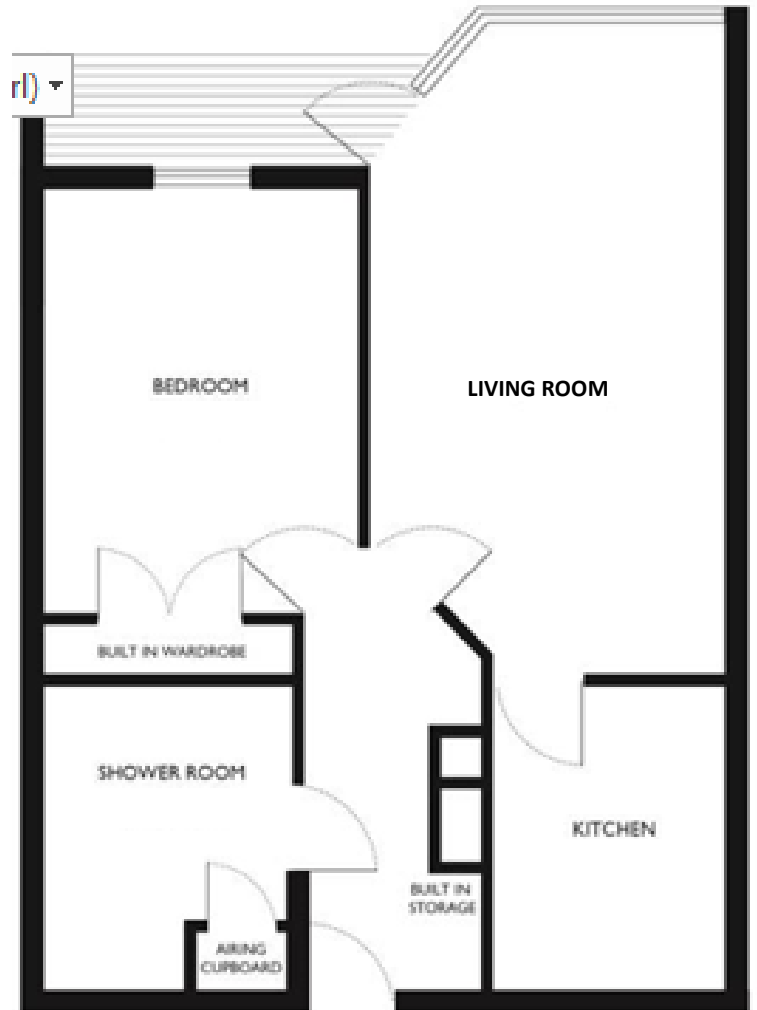
12 WESTFIELD HOUSE

Dimensions

Living room	5.81m x 3.22m	19'1" x 10'7"
Kitchen	2.71m x 2.10m	8'11" x 6'11"
Bedroom	3.73m x 2.74m	12'3" x 9'2"
Shower room	2.41m x 2.10m	7'11" x 6'11"

Please note this apartment is rented unfurnished. Dimensions shown are maximum. Certain particulars may vary, please check with our sales team.

You may need to meet with the Retirement Community Manager as part of the allocations process. This will be booked at a time convenient to you.



PLEASE CALL THE SALES TEAM TO BOOK A VIEWING

0117 949 4004

To unsubscribe

please phone the above number or
email sales.team@stmonicastrust.org.uk



St Monica Trust

