



Cote Lane

ST MONICA TRUST

11 Westfield House

**One bedroom ground floor apartment
with elevated view from balcony**



Cote Lane, Bristol BS9 3TJ



St Monica Trust

Rental £3,679 pcm



APPROVED
OPERATOR



Cote Lane
ST MONICA TRUST

11 Westfield House

Cote Lane, Bristol BS9 3TJ



View from apartment

Specification

- South West facing
- Entrance on the ground floor
- Sunny living room opening onto private balcony with elevated views
- Bedroom with fitted storage
- Hallway with fitted storage
- New shower room
- New modern kitchen with hob, extractor fan and eye level oven
- Refurbished 2024
- Constructed in 1985
- Immediately available

Current EPC Band C (Rating 80) | Potential EPC Band B (Rating 82)



APPROVED
OPERATOR



Restaurant



Chapel

Rental package includes

- All utility bills, council tax and community fees
- Daily three-course lunch
- Laundry and housekeeping
- 24 hour emergency care and support and porter security
- Please note, telephone and broadband costs are not included in the monthly rental charge

Viewings

Priority will be given to couples due to being a larger apartment. If you are interested in single occupancy you will be placed on the reserve list

Please call the sales team to book **0117 949 4004**

Please note

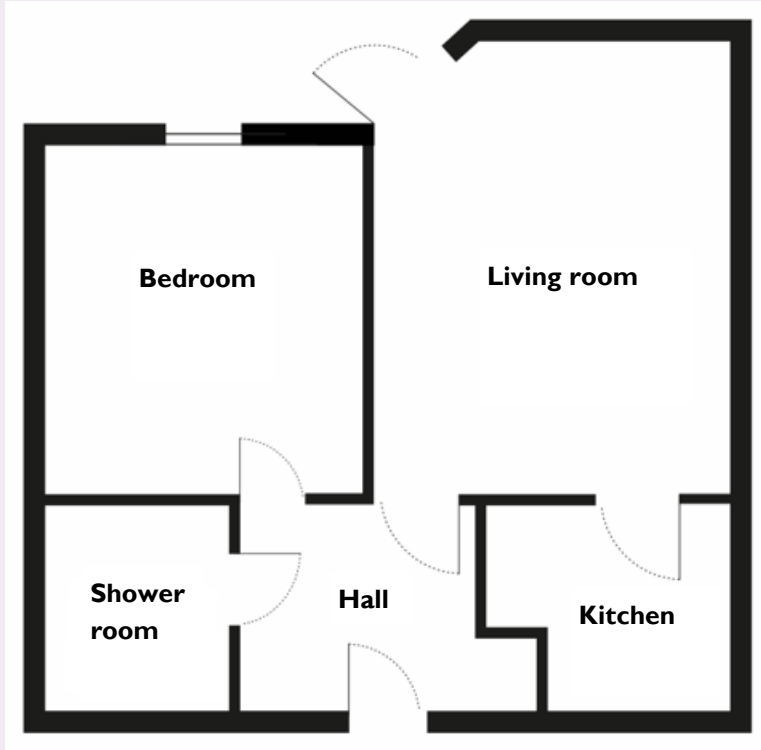
If you express an interest you may need to meet with the Village Manager immediately after your viewing appointment.



Cote Lane
ST MONICA TRUST

11 Westfield House

Cote Lane, Bristol BS9 3TJ



Living room

4.30m x 5.5m

14'1" x 18'0"

Bedroom

3.62m x 4.29m

11'10" x 14'0"

Kitchen

2.34m x 2.43m

7'8" x 7'11"

Shower room

2.11m x 2.43m

6'11" x 7'11"

To unsubscribe please telephone
0117 949 4004 or email
sales.team@stmonicastrust.org.uk



St Monica Trust APPROVED
OPERATOR

