



# Westbury Fields

ST MONICA TRUST

A RETIREMENT VILLAGE  
WITH A CRICKET PITCH AT ITS HEART



“I love the feel of the place”

“Westbury Fields  
is the place to be.”



## Welcome to Westbury Fields

Located in the suburbs of north Bristol, Westbury Fields is a retirement community with real charm. As with many villages across the country, life at Westbury Fields revolves around its picturesque village green, where cricket has been played every summer since 1935.

In fact, watching the sunset on a glorious summer evening with the birds singing and the sound of leather on willow in the background, it can be easy to forget that you're just minutes from the vibrant city centre of Bristol.

Be part of this friendly and welcoming community where you'll have the opportunity to expand your social circle and explore new interests and hobbies.

Put simply, we think you'll be bowled-over by Westbury Fields.

# Our approach

The St Monica Trust is a Bristol-based charity, founded by the philanthropy of the Wills family. Across all of the Trust's retirement villages and care homes, our commitment to providing older people with the best experience of ageing is as important today as it was to our founders a century ago.



## **A not-for-profit organisation**

We are proud of our charitable status. It allows us to devote ourselves to our communities and residents rather than to shareholders. This means that people from many different backgrounds can access and benefit from what we do.

## **What makes us different**

Our aim is to achieve the highest standards in all that we do. Aside from offering purpose-built accommodation, you can enjoy great food in our restaurants, an interesting selection of activities and superb service from any member of our team.

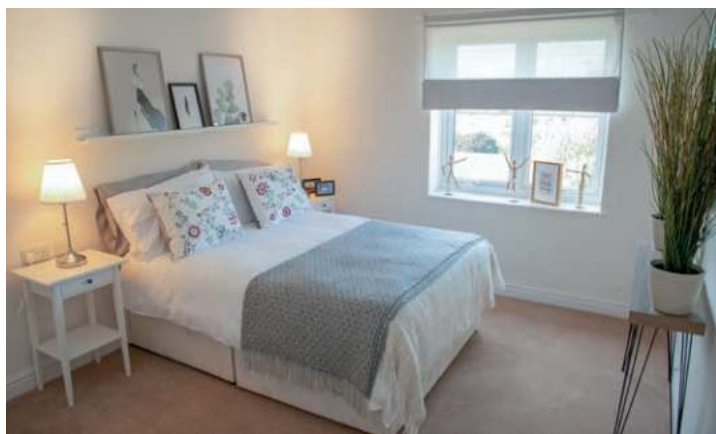
With St Monica Trust you can look forward to retirement safe in the knowledge that all the essential details will have been taken care of.

Should your needs change in the future, our expertise in care provision means we can offer you a range of support services. Depending on your requirements, our care and support team can provide varying levels of assistance within your home. And should you want more involved care, our nursing homes provide professional care in sensitive and supportive environments.









# Space to call home

Across the beautifully maintained village is a selection of purpose-built one, two and three bedroom apartments. Set within delightful gardens and open spaces, Westbury Fields has the feel of a peaceful rural setting, yet is located in a lively suburb of Bristol.

Each apartment has been created to blend functionality with ease of living. Well-proportioned kitchens and lounges are perfect for entertaining family and friends, whilst master bedrooms have en-suite shower rooms for convenience. Storage has not been overlooked with closets and built-in wardrobes featuring in many apartments.

Private gardens, patios and balconies offer access to outdoor spaces allowing residents to soak up the views and serenity of Westbury Fields. Allocated parking is available across the site and, of course, pets are very welcome.





# Enjoying village life

Although Westbury Fields has a peaceful rural village feel, scratch the surface and you'll find a vibrant community enjoying a diverse programme of activities and events.

Take part in some healthy competition playing croquet, indoor bowling and boccia, or try your hand at something new such as walking rugby. Get active in the gym with your own personalised programme, join a Zumba class or feel enlightened by the health and meditation benefits of Tai Chi.

Other activities and events include gardening clubs, arts and craft classes, film nights and live performances from a wide variety of visiting musicians, groups and singers. Together with weekly shopping trips, residents can also enjoy regular outings to visit local attractions and places of interest – all organised by

Westbury Fields' own dedicated Community Engagement Coordinator.

Discover the countryside surrounding Westbury Fields by exploring the woodland paths of Baddock Wood, the magnificent scenery at Blaise Castle or enjoying a round of golf at one of the local clubs.

Staying active and engaged has positive impacts on both body and mind, keeping you happier and healthy throughout your retirement. So no matter what the weather, social events, activities, fun and laughter are all part of everyday life at Westbury Fields.



Gym



Hair Salon



Library



Indoor Bowling



Croquet Lawn



Resident Lounges

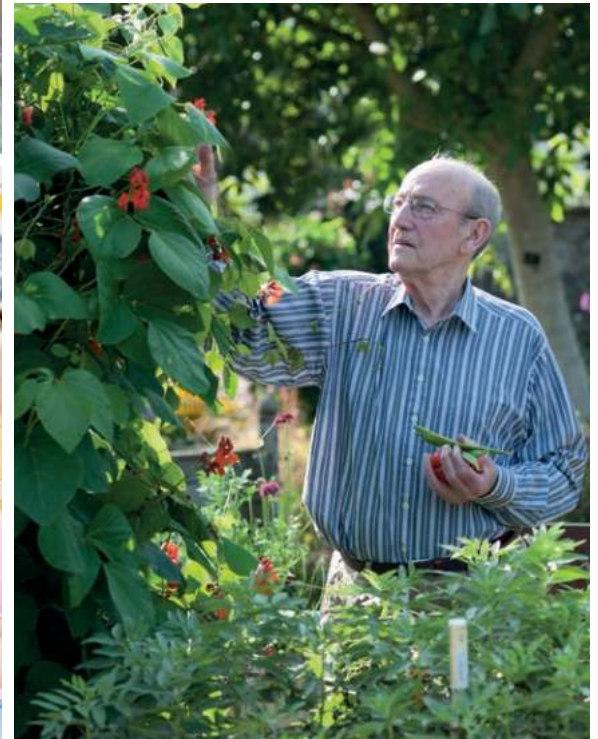


Arts and Crafts



Shopping Trips









# Healthy inside and out

Using fresh, seasonal and local ingredients our award-winning chefs are proud of the delicious meals they serve on a daily basis. Their strong belief in the importance of nutritious, interesting and varied menus can be experienced daily in the two on-site restaurants.

Enjoy the friendly pub atmosphere at The Cricketers or experience quality cuisine in the Sommerville restaurant, both offering catering to suit any dietary requirements. Menus change with the seasons and residents are invited to help choose what delicious dishes they'd like to enjoy throughout the year.

The Cricketers and Sommerville restaurant are also the venues for regular evening events including film and quiz nights and gourmet evenings. Whatever the occasion it's sure to be an enjoyable, social event with new friends from the Westbury Fields' community.





# Getting out and about

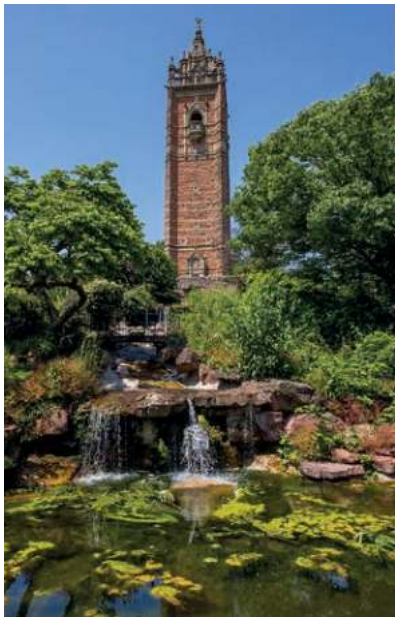
Westbury Fields is conveniently located so everything you need is close to hand. Shops, restaurants, a library and other amenities are within walking distance whilst nearby transport links offer quick routes to the centre of Bristol and beyond.



The charming suburb of Westbury-on-Trym is less than a mile from Westbury Fields. Here you will find a selection of independent shops, restaurants, cafés, and other amenities. The local GP surgery, post office and a number of banks are also located here. For a larger selection of stores including many well-known high street brands, the regional shopping centre, The Mall at Cribbs Causeway, is also within easy reach.

For a change of pace, the cultural centre of Bristol is just a short distance away. Whether it's exploring the historic harbourside, visiting the museums and art galleries, enjoying one of the many festivals, or a night at the theatre, Bristol has its own unmistakable identity.

Westbury Fields has excellent transport links with bus stops very close to the village entrances. For travel further afield the motorway network is only 10 minutes away, so the Midlands, London, the South West and Wales are all within easy reach. Trains to all parts of the UK run from Bristol's mainline station, Temple Meads, in the city centre. And for travel to Europe and the rest of the world, Bristol International Airport is a 30 minute drive to the south of the city.









# Safe, secure and stress-free

Everything at Westbury Fields is designed to make enjoying life as easy as possible. Relax and focus on what matters to you, knowing there is a host of services available to help eliminate the stresses and strains of everyday life.

## Safe and sound

One of the key benefits of living in a retirement village is the feeling of security. Door entry systems, CCTV and staff on-site 24 hours a day all help to make everyone feel safe and secure. And if you're away from Westbury Fields these same systems will give you peace of mind as you enjoy a holiday or visit family. Every apartment is also fitted with a discreet emergency call system to protect residents' well-being on a daily basis.

## Clean and tidy

Our team of housekeepers can clean your home for you and if you'd like your laundry done, we can take care of that too. An hour of housekeeping is included each week, but additional help is available if required.

## Inside and out

Our estates team ensure Westbury Fields remains immaculate and well-maintained. Should you encounter any problems within your apartment these can be easily notified so repairs can take place. And if you'd like help with any odd jobs around the home such as fixing shelves, hanging pictures or moving large deliveries just let the team know. The gardening team takes pride in all the outside spaces, ensuring the flowerbeds and gardens of Westbury Fields look their best throughout each season of the year.

*Please note: some services may incur additional charges.*



# A caring and supportive community

Staying independent in later life is important for everyone, but there may be occasions when you need a little help and assistance around the home. And if a time comes when longer-term care is required you'll be reassured to know there is a care home as part of the wider village complex at Westbury Fields.

## Care and support

Whether it's helping around your home or more complex needs, our village care and support team offer a flexible service, tailored to your exact requirements. And because we train and look after our own staff you can be sure your carer is friendly, dedicated and experienced.

## Nursing, respite and dementia care

Westbury Fields boasts a range of care facilities on-site at John Wills House. With an emphasis on providing personalised care, you'll notice the warm and friendly atmosphere. Within the care home, The Willows offers general nursing care, whilst The Beeches is available for short-term and respite care. The Orchards specialises in caring for people living with dementia.



## Dementia day service

The dementia day service offers a warm and inviting environment for people living with dementia. With its own entrance and outdoor spaces it's somewhere safe to enjoy stimulating and meaningful activities. Refreshments are provided throughout the day and delicious meals are freshly prepared on-site in the Sommerville restaurant.

## Continuity of care

Being able to provide continuity of care means residents can move into Westbury Fields knowing that whatever the future brings they will still be able to enjoy life and continue living within their community of friends. Having these facilities on-site not only helps reduce the emotional stress but also the financial burden of having to relocate should your care needs change.

## Spiritual well-being

Spiritual well-being is important for many residents and is provided by St Monica Trust's own chaplain and pastoral care team. Available for all, regardless of faith or religious beliefs, the pastoral care team arrange regular worship and can offer support during challenging times.

*Please note: some services may incur additional charges.*

# A sporting legacy

The sound of leather on willow has been heard here each summer since the early years of the 20th century. Originally the home of Westbury-on-Trym Cricket Club, Westbury Fields is now home to Bishopston Cricket Club - one of the longest established sports clubs in Bristol with a history that dates back to 1897.



All residents of Westbury Fields become honorary members of the cricket club and are welcomed to the pavilion to enjoy afternoon tea and watch the action, on what must be one of the most picturesque cricket grounds in Bristol.

Officially opened by The Princess Royal in May 2005, Westbury Fields is now a flourishing community and home for over 200 residents.

Westbury Fields is only a short distance from Cote Lane, the site of the Trust's first home, founded on the vision of Mary Monica Wills.

And whilst her dream to create a small rest home for “five or six missionary friends” has certainly grown over the last 100 years, the sentiment of the Wills’ family motto “*tempus fugit, caritas manet*” (*time flies, love remains*) remains as true to the Trust today as it did back then.



# Come and find out more

We'd love to tell you more about Westbury Fields and our sales teams are available to answer any questions. They also run regular tours so you can explore the apartments and experience village life for yourself.

To find out more please call **0117 949 4004**, email **[sales@stmonicastrust.org.uk](mailto:sales@stmonicastrust.org.uk)** or visit **[www.stmonicastrust.org.uk](http://www.stmonicastrust.org.uk)**

**Facebook** @SMTWestburyFields

**Twitter** @St\_Monica\_Trust

## **Westbury Fields**

Sommerville, Cricket Lane, Westbury Fields, Westbury-on-Trym, Bristol, BS10 6TW

## **Head office**

St Monica Trust  
Cote Lane, Westbury-on-Trym,  
Bristol, BS9 3UN

**[www.stmonicastrust.org.uk](http://www.stmonicastrust.org.uk)**

*Registered charity number 202151  
11/19 | 1,000*

*Some featured images may be from a variety  
of St Monica Trust sites.*

Photo p12: **Martin Hewer**

Photo p17: **Matt Hunkin @cricket skies**



“It’s an amazing place”

“Every member of the  
team is incredible”

“A really nice place...  
very pleasant staff”



St Monica Trust

---

To book a tour or find out more call  
**0117 949 4004**

